

UPDATES AND FREQUENTLY ASKED QUESTIONS (FAQ) ABOUT THE DISTRICT OF COLUMBIA (DC) PANDEMIC ELECTRONIC BENEFITS TRANSFER (P-EBT) PROGRAM



1. WHAT ARE P-EBT BENEFITS?

- P-EBT benefits are a temporary federal food benefit for families who have children who are eligible to receive free and reduced-price school meals (FARM) under the National School Lunch Program (NSLP) but could not receive these meals because of the COVID-19 pandemic. Children under age 6 who are part of a household receiving SNAP may also be eligible for P-EBT benefits.

2. WHO WILL RECEIVE SUMMER P-EBT BENEFITS?

- Children who were **under the age of 6 on September 30, 2021 AND** are part of a SNAP household are automatically eligible.
- For students **over age 6 for SY2021-2022** they must either:
 - Enrolled in a community eligibility provisions (CEP) school OR
 - Enrolled in a District school that participates in the National School Lunch Program (NSLP) AND
 - Applied for Free and Reduced-Price Meals (FARM) before August 29, 2022 and were approved for Summer 2022 OR
 - Are categorically approved for FARM by their school (which includes students who are receiving SNAP and TANF).

3. IF CHILDREN ARE ELIGIBLE, HOW MUCH MONEY WILL THEY GET AND WHEN?

- Each eligible DC child will receive the federally approved flat benefit of \$391 for the summer.
- Children who were under age 6 on September 30, 2021 and were part of a household participating in SNAP will receive a monthly benefit of \$60.20 per month they were enrolled in SNAP or \$602.02 for the school year.
- Benefits for Summer 2022 will be issued by the end of September 2022.

4. HOW DO DISTRICT FAMILIES NOT CURRENTLY CERTIFIED FOR FREE OR REDUCED-PRICE MEALS APPLY TO BE ELIGIBLE FOR SUMMER BENEFITS?

- DC children who become eligible for FARM during Summer 2022 are eligible for summer P-EBT as well. A school must receive a child's FARM application before August 29, 2022 and then approve the application before a child can be eligible for Summer P-EBT benefits.
- Families whose child attends a DCPS school that administers the federal FARM program can find more information at dcps.dc.gov/publication/free-and-reduced-priced-meals-farm-application.
- Families who are unsure if their school participates in the federal FARM program should contact their child's school to find out if they can apply for FARM. This includes public and charter schools.

5. HOW DO HOUSEHOLDS THAT ALREADY HAVE AN EBT CARD ACCESS P-EBT BENEFITS?

- For eligible children in households receiving SNAP or Temporary Assistance for Needy Families (TANF), P-EBT benefits will be automatically loaded onto the household's existing EBT card. No action is needed from customers receiving SNAP or TANF.
- If a family does not have their originally issued EBT card, they can request a new one by calling FIS, the District's EBT partner, 24 hours a day, 7 days a week at their hotline (888) 304-9167.



6. HOW DO HOUSEHOLDS WHO DO NOT HAVE AN EBT CARD ACCESS P-EBT BENEFITS?

- Customers who have received P-EBT in the past (including SY21-22), but are not participating in SNAP or TANF will have benefits added to their existing EBT card.
- Students receiving P-EBT for the first time will be automatically mailed for children whose families do not already have a card.
 - DHS will mail the card to the address on the child's school file, so it is important to ensure your address is up to date with your school.
 - The District's EBT card company, FIS, can not make any address updates. If you request a replacement card from FIS, they will only mail it to the address DHS has on file. You must ensure your address is always up to date.
 - If you are trying to get a replacement card and you can't tell if your address is up to date, you should submit a P-EBT Web Inquiry Form to DHS.
- To learn how to activate a new card (or a reissued card that was never activated) and create a Personal Identification Number (PIN), go to <https://dhs.dc.gov/page/ebt-card-p-ebt-updates>.

7. WILL HOUSEHOLDS BE NOTIFIED THAT THEY ARE RECEIVING P-EBT BENEFITS?

- Yes. Notices will be mailed to households who received P-EBT benefits when an issuance is made.
- Yes. Automated calls will be made to families with current phone numbers on file.
- Families can also always log in to www.ebtedge.com or download the free EBT Edge app from the Apple store or Google Play Store to check their balances.

8. WHAT CAN HOUSEHOLDS PURCHASE WITH P-EBT BENEFITS?

- P-EBT benefits work the same as SNAP food benefits. Households that receive P-EBT benefits can use the funds to purchase food only. The intent of these benefits is to provide funds to purchase food to make meals for children that would normally have been provided to them at school.

9. WHERE CAN P-EBT BENEFITS BE USED?

- P-EBT benefits can be used to purchase food at any SNAP retailer. Most retailers have signs stating they accept SNAP or EBT. Authorized SNAP retailers are listed at <https://www.fns.usda.gov/snap/retailer-locator>.
- Families can also visit www.ebtedge.com or download the EBT Edge Mobile app from the Apple or Google Play store to find retailers that accept EBT cards.
- P-EBT benefits can also be used to make online food purchases for delivery at Amazon and Aldi. More information is at: <https://www.amazon.com/snap-ebt/> or shop.aldi.us/

**10. DO THE P-EBT BENEFITS HAVE TO BE USED IN THE MONTH THEY ARE RECEIVED?**

- No. The money will carry over from month to month.

11. WHAT IF I NO LONGER HAVE MY EBT CARD?

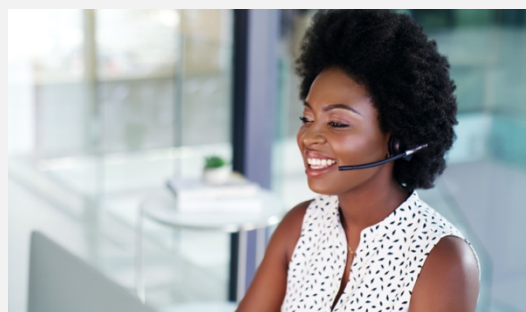
- Please call FIS, the District's EBT partner 24 hours a day, 7 days a week at their hotline (888) 304-9167 to get a replacement card. Your PIN will remain the same for the replacement card so you should change your PIN when you receive your new card.

12. WILL GETTING P-EBT IMPACT A HOUSEHOLD'S "PUBLIC CHARGE" STATUS?

- No. Using P-EBT benefits does not impact parents' or their children's immigration status. The Public Charge rule does not apply to P-EBT benefits.

13. WHERE IS ADDITIONAL INFORMATION LOCATED?

- Visit DHS' P-EBT page: dhs.dc.gov/p-ebt
- P-EBT Call Center at (202) 727-5355, Monday–Friday, 7:30 am – 4:45 pm



These resources are available for households in need of food immediately:

Resources	Phone	Website
DC's Coronavirus Food Resources Page		https://coronavirus.dc.gov/food

Capital Area Food Bank	(202) 644-9800	https://www.capitalareafoodbank.org/
So Others Might Eat (SOME)	(202) 797-8806	https://www.some.org/
Bread for the City	(202) 265-2400	https://breadforthecity.org/